



Funded by a 5-yr research centre grant
2015 to 2019

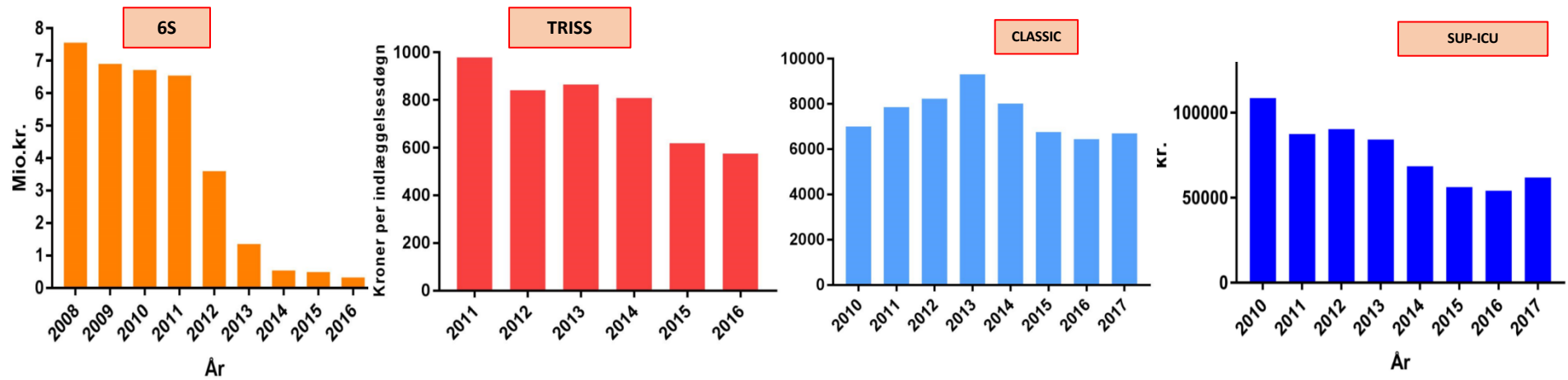


What we have done...

- Build a cost-effective model that improves care
 - Asked questions that are clinically relevant
 - Obtained funding
 - Trial programs
 - Network
 - Impact
 - Unique tools
 - Trained the next generation

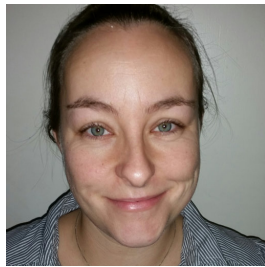
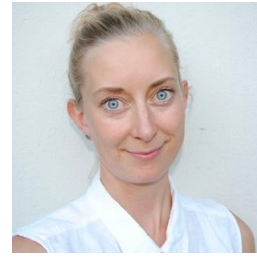


The use of the interventions in clinical practice



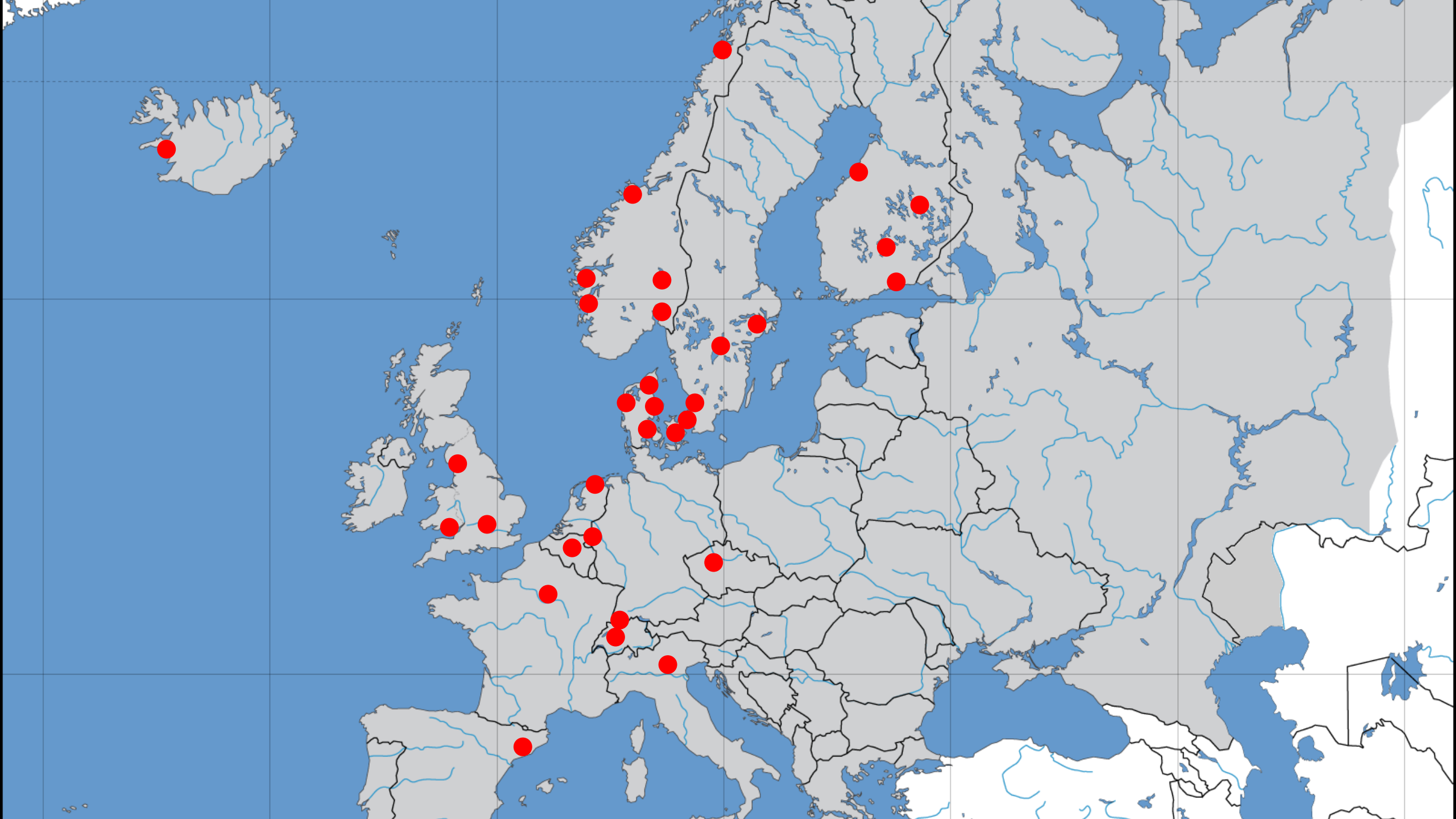
CULTURE







Scandinavian Critical Care Trials Group



CTU Copenhagen Trial Unit

Centre for Clinical Intervention Research

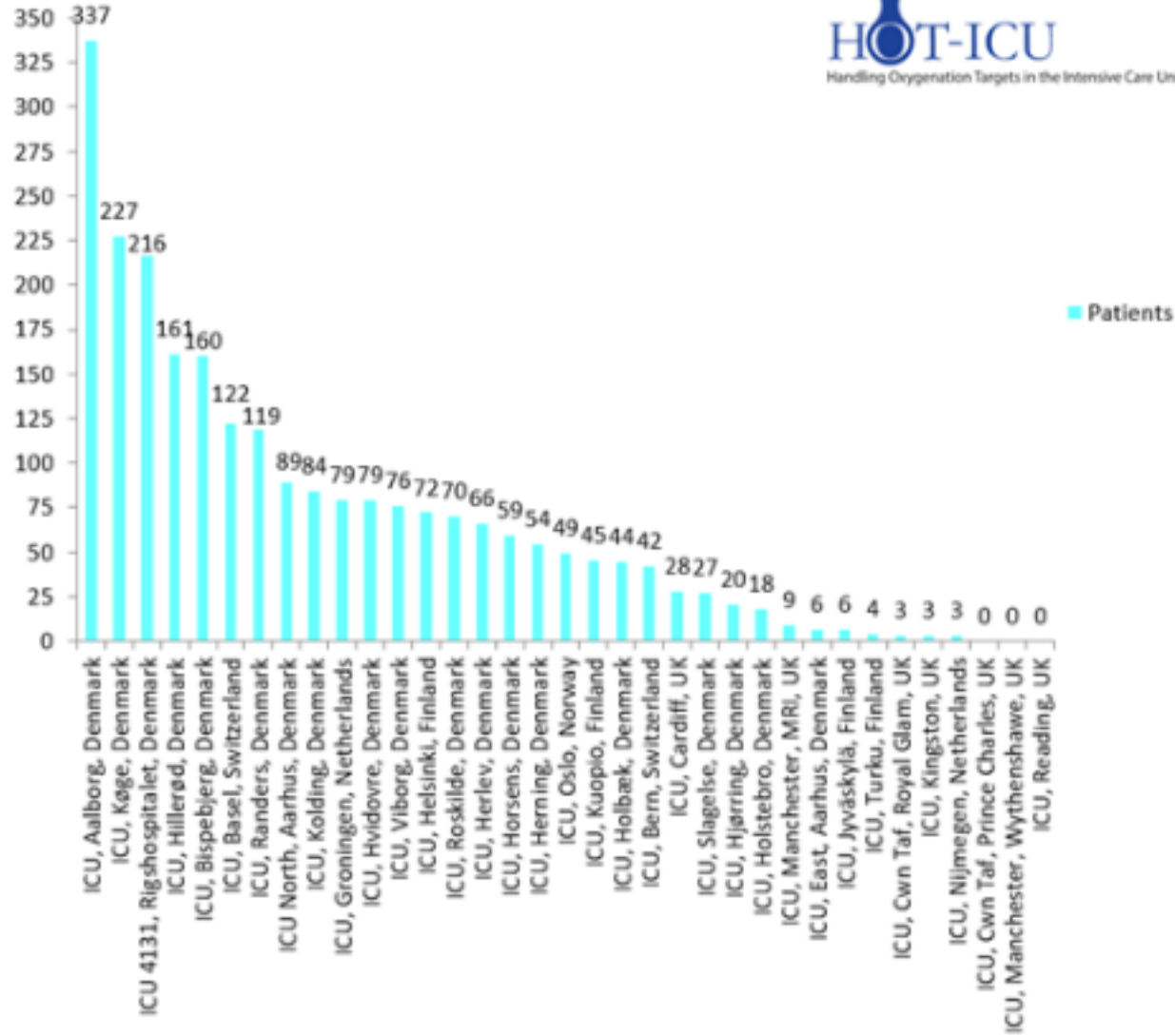


Section of Biostatistics

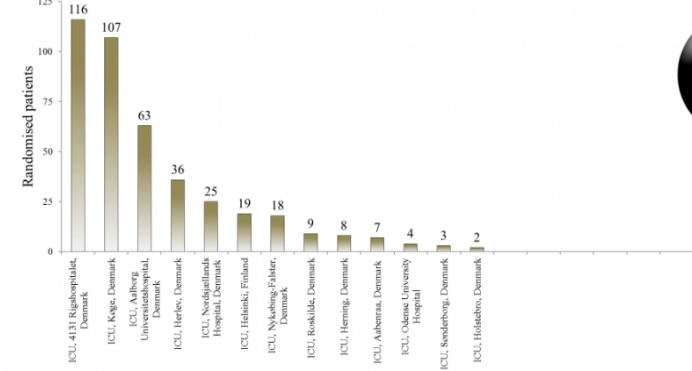
VIVÉ

DET NATIONALE FORSKNINGS-
OG ANALYSECENTER FOR VELFÆRD

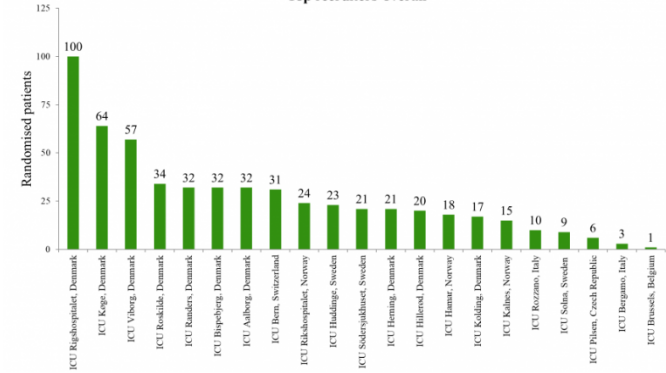
Top recruiters overall



Top recruiters overall



Top recruiters overall



Future programs...

- GODIF on forced fluid removal
- Spontaneous breathing in ARDS
- Dosing of LMWH in high risk patients
- Antibiotics in septic shock
- Atrial fibrillation
- Platelets

Collaboration on Research in Intensive Care

- Network of ICUs and method centers doing trials together
- Including, transparent, fair
- Slim-line organization
- Open steering committee
- Bi-annual meetings
- Resources among participants
- Funding for specific trial programs

SIM 2020 COPENHAGEN 13-15 MAY

SCANDINAVIAN INTENSIVIST MEETING

[SUBMIT ABSTRACT](#)

[REGISTRATION](#)

www.sim2020.eu



CRIC

Collaboration for Research in Intensive Care

Collaboration on Research in Intensive Care

- Network of ICUs and method centers doing trials together
- Including, transparent, fair
- Slim-line organization
- Open steering committee
- Bi-annual meetings
- Resources among participants
- Funding for specific trial programs