

# **Pro- og antiinflammatorisk respons hos kritisk syge patienter med endothelskade**

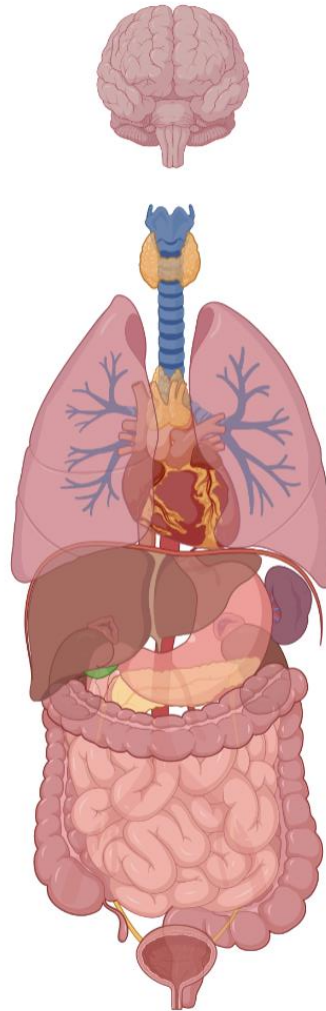
**Anæstesiologisk afdeling, Sjællands Universitetshospital, Køge**

**CAG Center for Endotheliomics, Blodbanken Rigshospitalet**

Ph.d.-studerende Caroline Humble

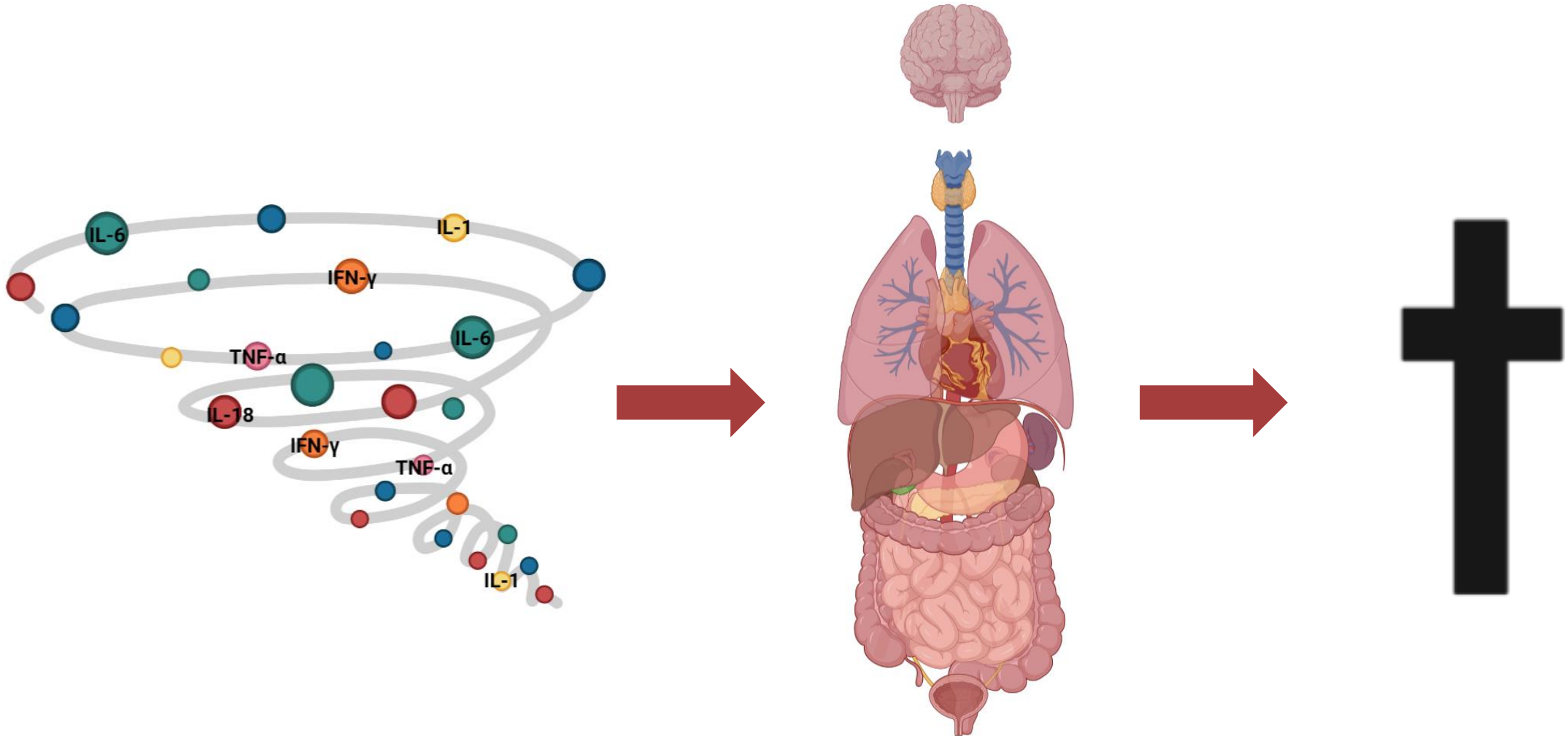
# Hvad ved vi?

**Hver 3.** kritisk syg ITA-patient i DK dør som følge af multiorgandysfunktion syndrom (MODS)



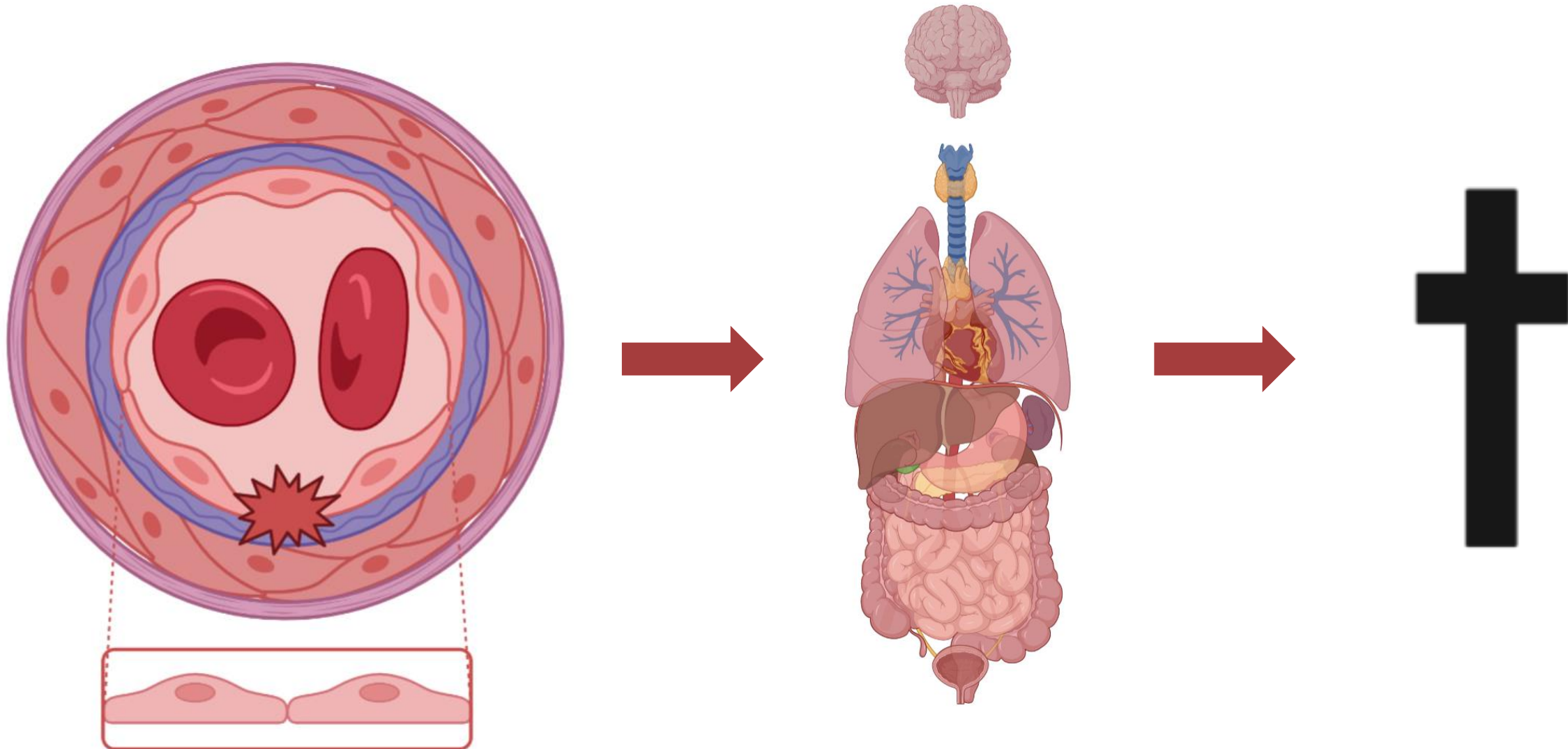
# Cytokinstorm

**Aktuel** forståelse af MODS-udvikling: Dysreguleret immun- og proinflammatorisk respons

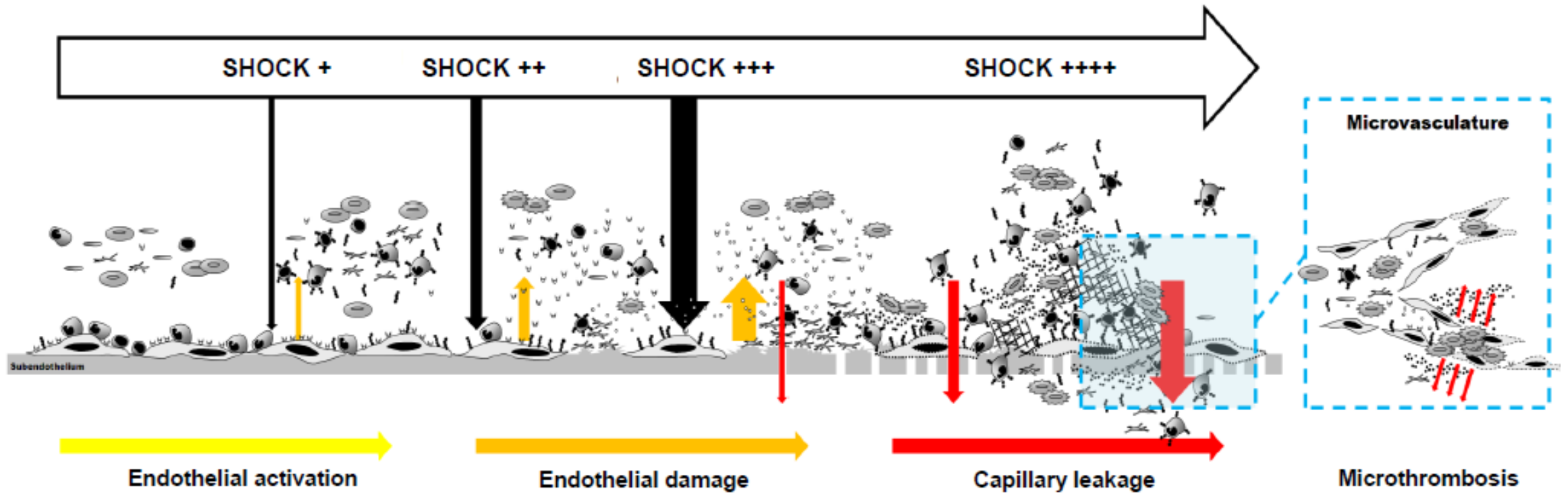


# Endothelet & SHINE

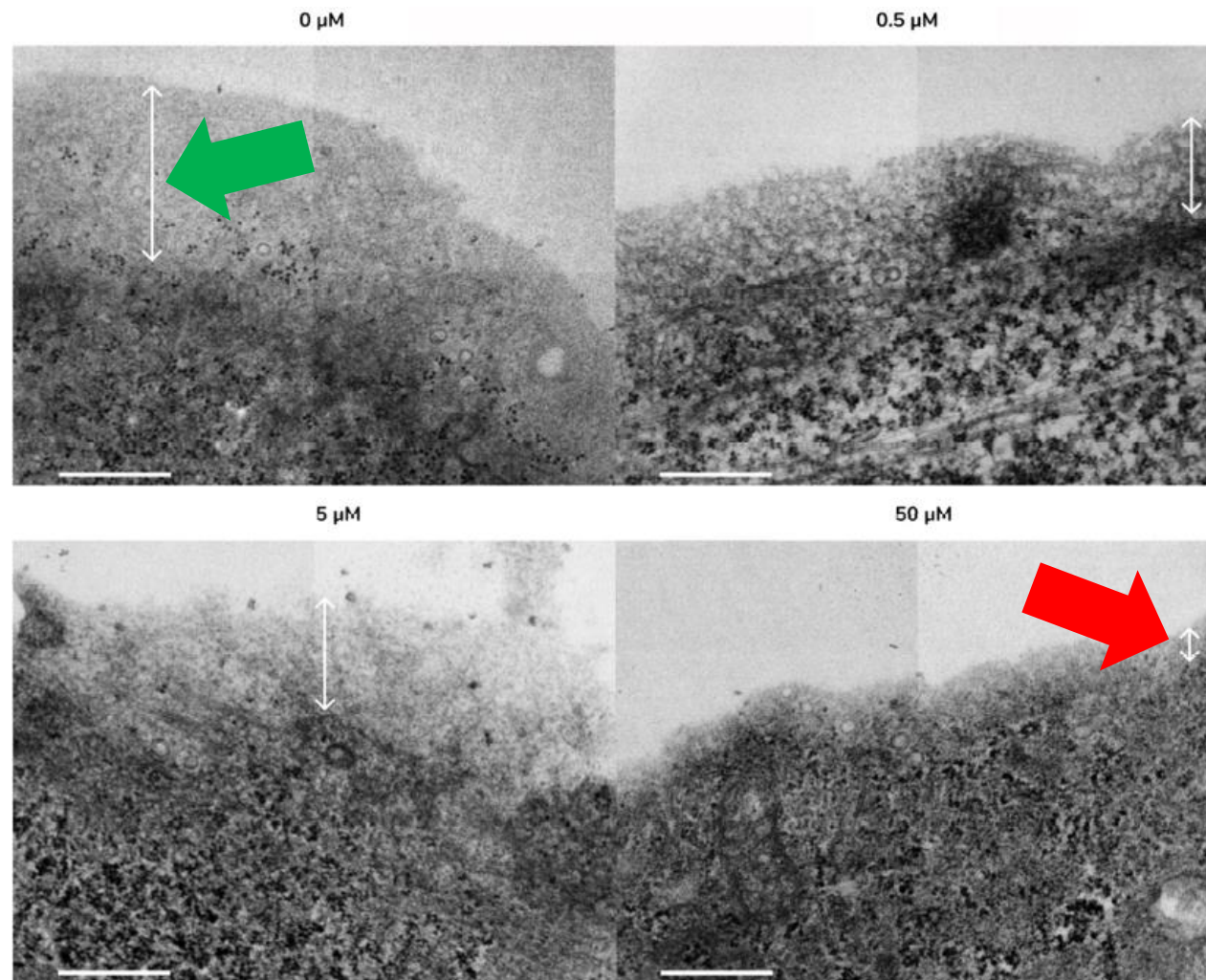
**Ny** forståelse af MODS-udvikling: Shock-induceret endothelskade/endotheliopati (SHINE)



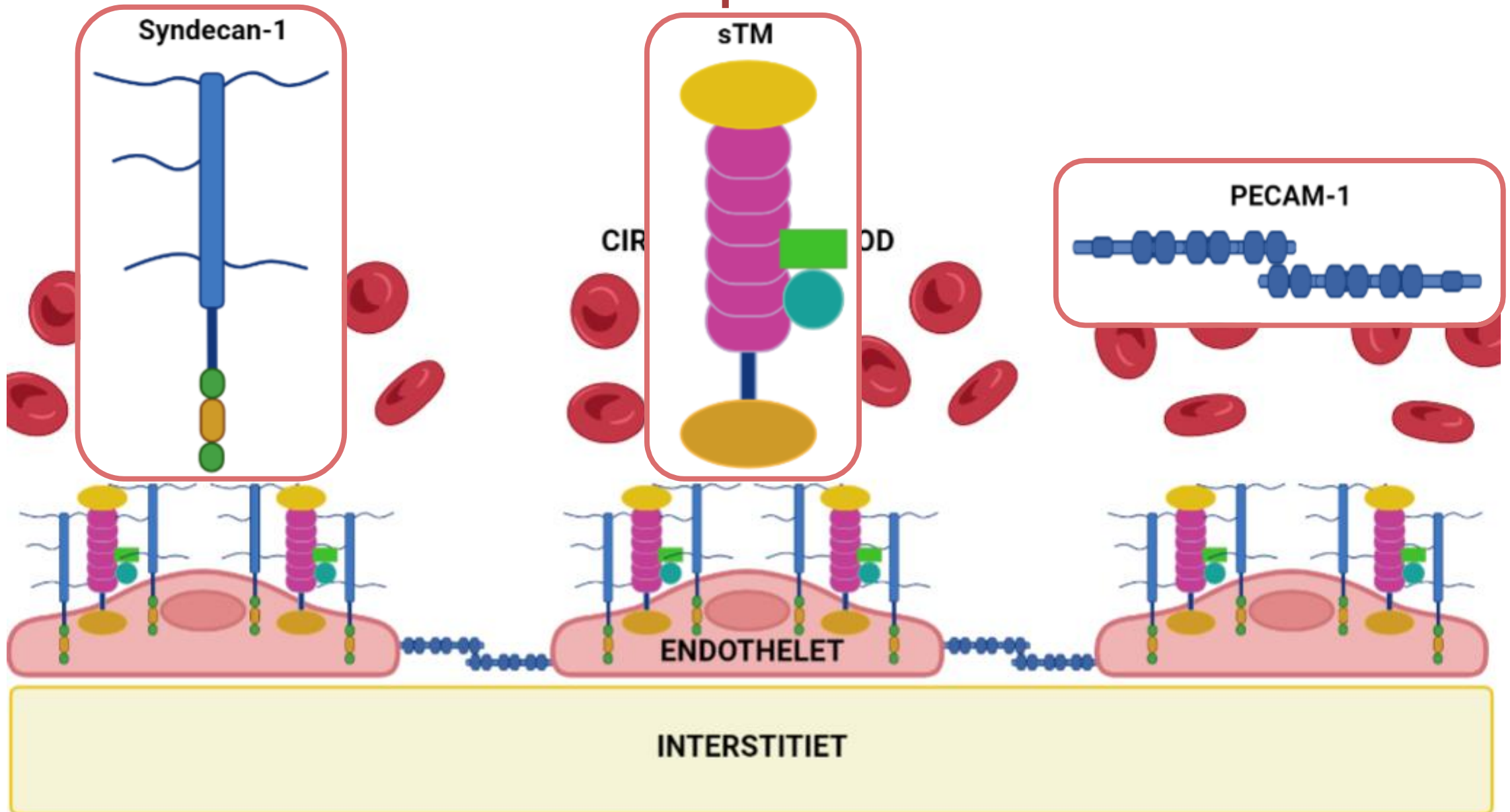
# Endothelet & SHINE



# Endothelet & SHINE



# Endotheliopati-markører

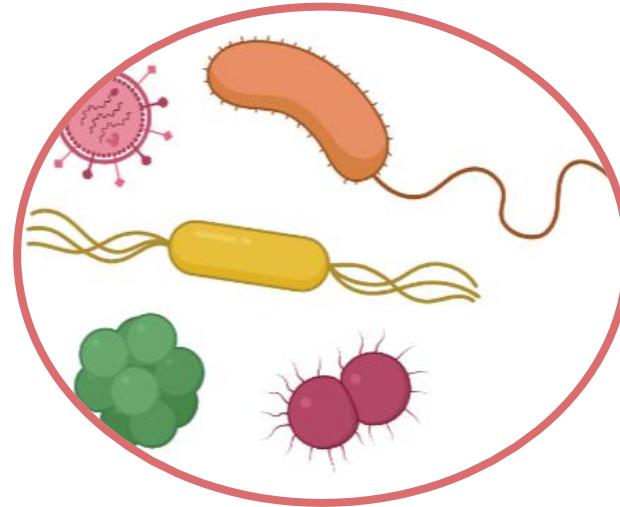


# Endotheliopati-markører

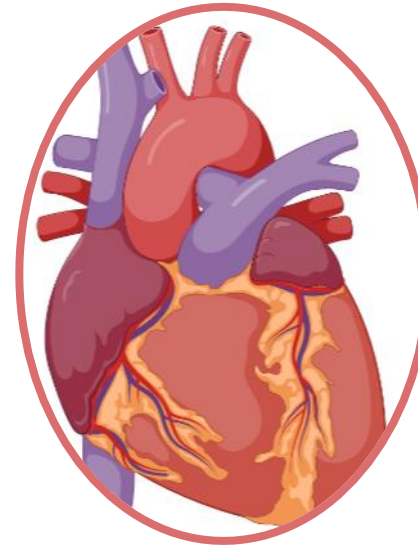
Endotheliopati: Prædikator for MODS & død



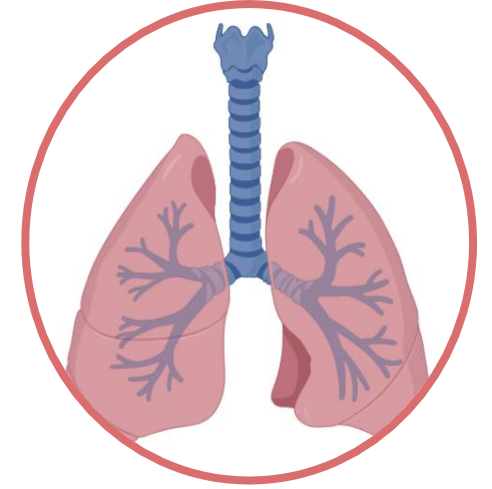
2.300 traume-patienter



1.400 sepsis-patienter



700 AMI-patienter  
160 OHCA-patienter

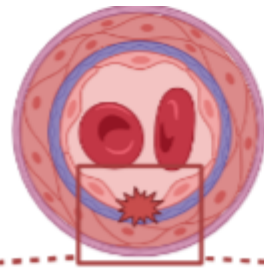


459 mekanisk  
ventilerede patienter

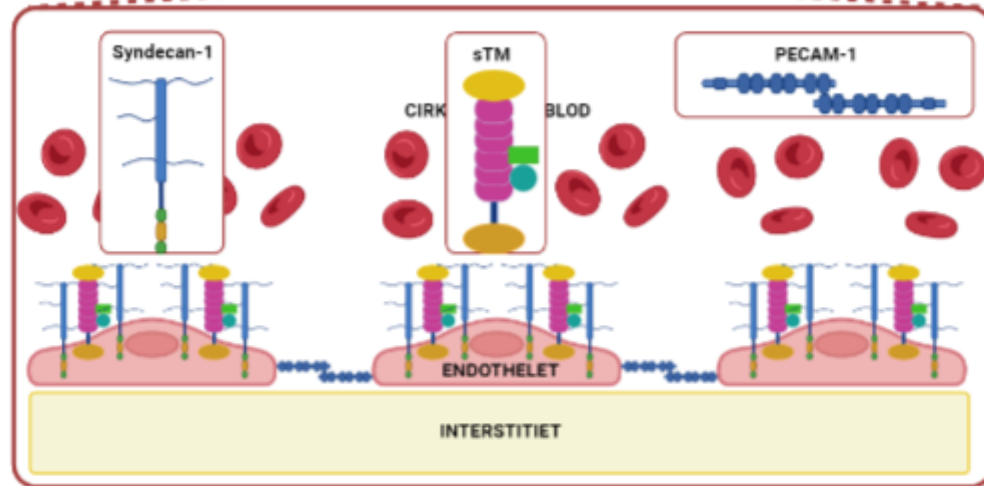


**Hypotese**

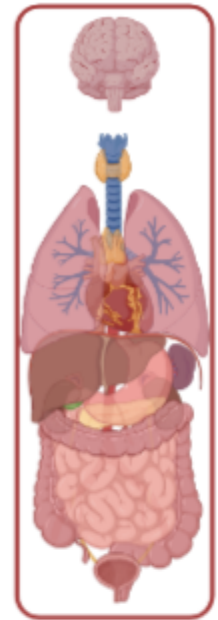
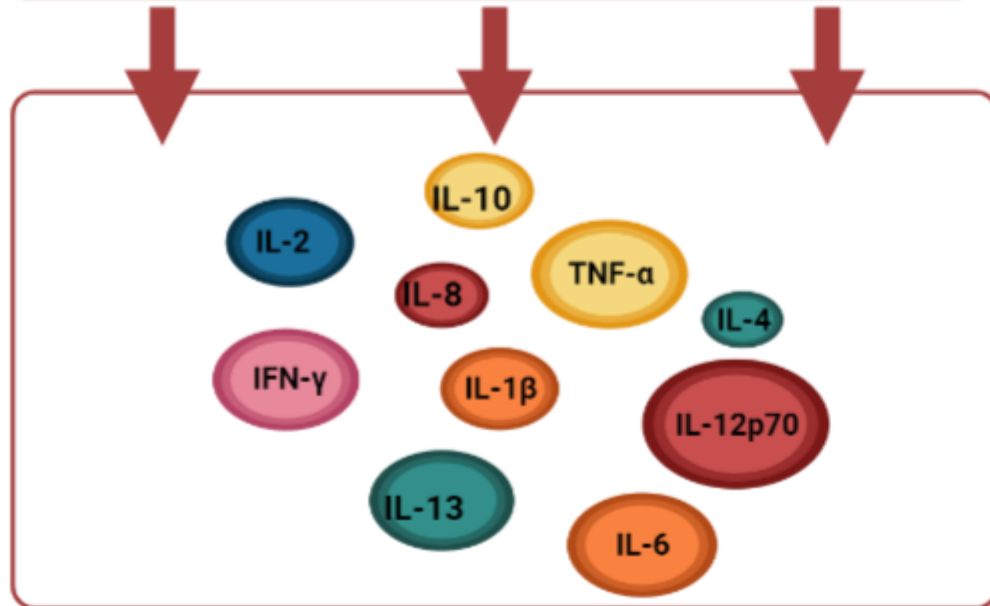
# Hvad vil vi undersøge?



Primært formål



Sekundært formål



## Hvordan undersøger vi det?



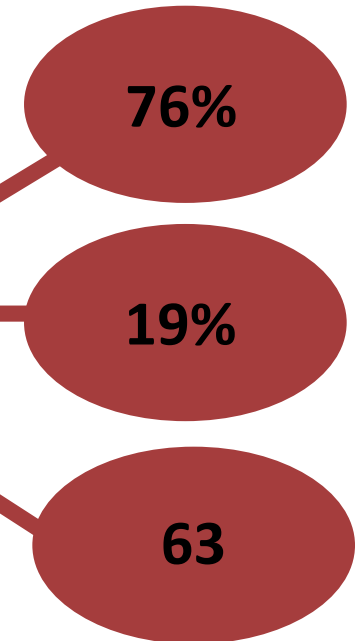
Voksne  
Akut kritisk syge  
Forventet  $\geq 24$  timers ITA-indlæggelse  
Aktiv behandling

Blodprøver til dag 5  
Klinisk data til dag 30

Analyse af baseline blodprøver:  
Syndecan-1, sTM, PECAM-1  
10 inflammatoriske markører

# Baseline karakteristik

Patient characteristics at baseline	
Variables	All patients (n=468)
Age, years median (IQR)	71 (62-79)
Sex, female n(%)	199 (43)
History of stroke n(%)	46 (10)
History of COPD n(%)	147 (31)
History of hypertension n(%)	243 (52)
History of myocardial infarction n(%)	52 (11)
History of heart failure n(%)	43 (9)
History of diabetes n(%)	113 (24)
Type of admission	
Medical n(%)	358 (77)
Surgical n(%)	110 (23)
Acute infection n(%)	354 (76)
Septic shock n(%)	89 (19)
KDIGO Score $\geq 2$ n(%)	118 (25)
SAPS 3 median (IQR)	63 (55-73)
Use of life support	
Mechanical ventilation n(%)	370 (77)
Vasopressors or inotropes n(%)	157 (34)
Renal-replacement therapy n(%)	15 (4)



# Begrænsninger

- **Ingen kausalitet**
- **Single center**
- **Ingen screenings-log**
- **Selekteret antal markører**
- **Ingen serielle målinger**

# Perspektiver



# TAK!

- **Finansiering: Greater Copenhagen Health Science Partners, Region Sjællands Sundhedsvidenskabelige Forskningsfond, DASAIMs Forskningsinitiativ, Kong Christian den Tiendes Fond**
- **Hjemmeside: [gchsp.dk](http://gchsp.dk)**
- **Email: [caah@regionsjaelland.dk](mailto:caah@regionsjaelland.dk)**





# Referencer

- 1) Vincent JL, et al. Assessment of the worldwide burden of critical illness: the intensive care over nations (ICON) audit. *Lancet Respir Med*. 2014;2: 380-6.
- 2) Rauss A, et al. Prognosis for recovery from multiple organ system failure: the accuracy of objective estimates of chances for survival. The French Multicentric Group of ICU Research. *Med Decis Making*. 1990;10: 155-62.
- 3) Årsrapport: Dansk Intensiv Database, 2021.
- 4) Fajgenbaum DC, et al. Cytokine Storm. *N Engl J Med*. 2020;383: 2255-73.
- 5) Johansson PI, et al. Shock induced endotheliopathy (SHINE) in acute critical illness - a unifying pathophysiologic mechanism. *Crit Care*. 2017;21: 25.
- 6) Johansson PI, et al. A high admission syndecan-1 level, a marker of endothelial glycocalyx degradation, is associated with inflammation, protein C depletion, fibrinolysis, and increased mortality in trauma patients. *Ann Surg*. 2011;254: 194-200.
- 7) Johansen ME, et al. Profound endothelial damage predicts impending organ failure and death in sepsis. *Semin Thromb Hemost*. 2015;41: 16-25.
- 8) Johansson PI, et al. Association between sympathoadrenal activation, fibrinolysis, and endothelial damage in septic patients: a prospective study. *J Crit Care*. 2014;29: 327-33.
- 9) Ostrowski SR, et al. Association between biomarkers of endothelial injury and hypocoagulability in patients with severe sepsis: a prospective study. *Crit Care*. 2015;19: 191.
- 10) Ostrowski SR, Pedersen SH, Jensen JS, et al. Acute myocardial infarction is associated with endothelial glycocalyx and cell damage and a parallel increase in circulating catecholamines. *Crit Care*. 2013;17: R32.
- 11) Johansson PI, et al. Sympathoadrenal activation and endothelial damage are inter correlated and predict increased mortality in patients resuscitated after out-of-hospital cardiac arrest. a post Hoc sub-study of patients from the TTM-trial. *PLoS One*. 2015;10: e0120914.
- 12) Schønmann-Lund M, Itenov TS, Larsson JE, et al. Endotheliopathy is associated with slower liberation from mechanical ventilation: a cohort study. *Crit Care*. 2022;26: 33.